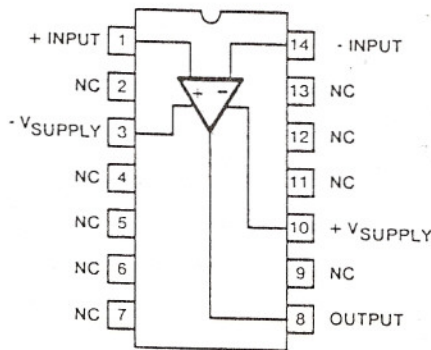
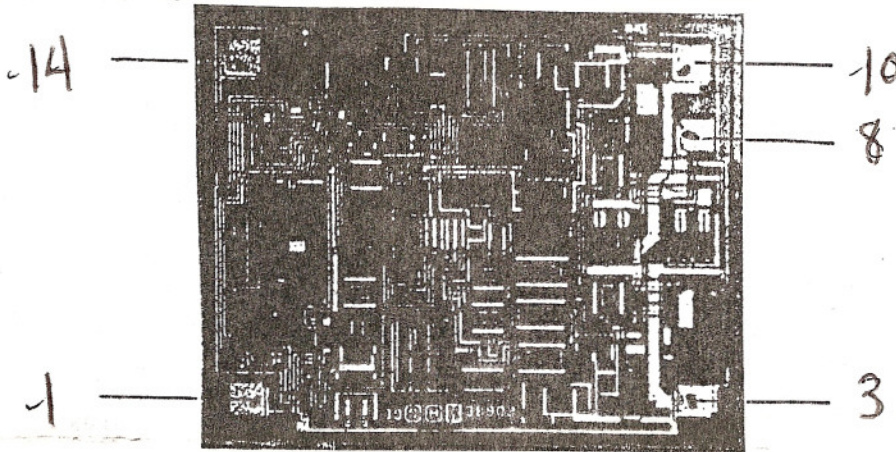




# Sierra Components, Inc.

2222 Park Place Building 3 Suite E • Minden, Nevada 89423  
 Phone: 775.783.4940 Fax: 775.783.4947

Chip back potential is the level which bulk silicon is maintained by on-chip connection, or it is the level to which the chip back must be connected when specifically stated below. If no potential is given the chip back should be isolated.



**Topside Metal: Al**  
**Backside: Si**  
**Backside Potential: -**  
**Mask Ref: -**  
**Bond Pads: .004" min.**

**APPROVED BY: CD**  
**MFG: Harris/ Intersil**

**DIE SIZE: .072" x .058"**  
**THICKNESS: -**

**DATE: 7/25/02**  
**P/N: HA2539-2 or -6**

DG 10.1.2  
 Rev A 3-4-99